



osteoblade™
Ultrasonic Bone Scalpel System



MAVERA®
medical devices

...With a focus on
selective tissue
protection.



“A superior bone scalpel method going beyond just ‘cut’ the hard tissue”

OsteoBlade™ Ultrasonic Bone Scalpel

A Revolutionary Device Offering Better Results

- **Tissue Selective**
- **Less Bleeding**
- **Improved Efficiencies**

Principle of Operation

Ultrasonic surgery is realized between 20-60 kHz. In principle, the outlet voltage is supplied at 50 to 60 hertz. The generator boosts the frequency to 26-36 K hertz. The resulting ultrasonic frequency is delivered into the handle. Piezo-crystals transform the electrical energy into mechanical vibratory motion. This causes the blade to oscillate longitudinally at the ultrasonic frequency of 26.000-36.000 strokes per second. Sterile Saline is pumped toward the blade when cooling is required.

1) Tissue Selective

The relative selectivity of OsteoBlade™ for bone cutting has to do with the relative rigidity of bone compared to soft tissues. When the blade comes in contact with rigid bone, the bone does not bend, deform, or move away from the tip. As a result, a large amount of energy is transferred to a small amount of bone at the point of contact, resulting in destruction of that bone. In contrast, soft tissue structures (such as ligamentum flavum, posterior longitudinal ligament, and dura) can bend, deform, move away, and vibrate upon contact with the blade, thus dampening the energy transfer and protecting the tissue from destruction. It is important to note that this selectivity is not absolute. With sufficient time and pressure, soft tissues will be cut. Safe and efficient use in spine surgery depends on development of a tactile “feel” for penetrating the inner cortex of bone. After this penetration occurs, the blade should come in contact with underlying tissues for a limited time with limited pressure

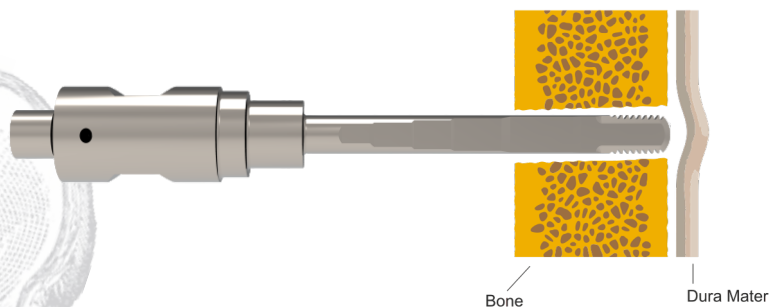


2) Less Bleeding

Surgeons have also noted significantly less bleeding in operations performed with ultrasonic scalpels (1). Ultrasound has coagulative effects and can cauterize the small venous channels in cancellous bone. This heat is quickly dissipated by efficient irrigation mechanism. More importantly, en bloc (vs. piecemeal) removal of bone minimizes the duration (and therefore the total volume) of bleeding from epidural veins while the bleeding is controlled.

3) Improved Efficiencies

The longitudinal blade motion enables precision osteotomies free of gyroscopic effects and facilitates cutting techniques for en-bloc bone dissection and in close proximity to delicate soft tissue structures. Substantial time savings have been reported for advanced osseous resections in the spinal anatomy such as multilevel laminectomies and bilateral facetectomies.



Indications

OsteoBlade™ Ultrasonic Bone Scalpel System is indicated for using selectively fragmentation, resection, emulsification, irrigation and/or aspiration of hard (e.g.: bone, calcified lesion) tissue in the following surgical specialties: Orthopedic Surgery, Plastic and Reconstructive Surgery, Neurosurgery, Thoracic Surgery, Thoraco-Lumbar-Laminectomy, Cardiovascular Surgery Laminotomy, Foraminotomy, Sacral Laminoplasty, otolaryngology (ear nose and throat) Interventions.

OsteoBlade™ Ultrasonic Bone Scalpel System should be used by surgeons or medical staffs who have received the appropriate training. OsteoBlade™ Ultrasonic Bone Scalpel System is indicated for using selectively fragmentation, resection, emulsification, irrigation and/or aspiration of hard (e.g., bone, calcified lesion) tissue. Indications, contraindications and instructions for use can be found on the product labeling supplied with each device.



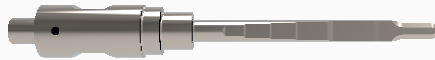
Mechanism of Action

OsteoBlade™ Ultrasonic Bone Scalpel is intended to be used in selectively fragmentation, resection, emulsification, irrigation and/or aspiration of hard (e.g.: bone) tissue. Much like an osteotome, the blade moves forward and backward. However, the amplitude of this movement is much smaller than that of an osteotome (35-300 microns), thus transferring only a small amount of energy to bone with each impact. The very high frequency at which the blade moves back and forth to impact the bone (26-36 kHz) compensates for the small energy of each individual impact, thus resulting in a large transfer of energy to bone at the point of contact. Again, this energy disintegrates a narrow sliver of bone and develops a cleavage plane.



Tip Guide

Blade XXV



OSR - XXV - S

P.L.: 83 mm **A.L.:** 47 mm **KHz:** 36 **TL:** 9.6 mm **ID:** Ø1.5 mm

Blade XXVII



OSR - XXVII - S

P.L.: 81 mm **A.L.:** 47 mm **KHz:** 36 **TL:** 7.9 mm **ID:** Ø1.5 mm

Blade XXXI



OSR - XXXI - S

P.L.: 81 mm **A.L.:** 47 mm **KHz:** 36 **TL:** 7 mm **ID:** Ø1.5 mm

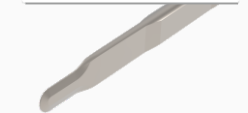
Blade XXXII



OSR - XXXII - S

P.L.: 80 mm **A.L.:** 45 mm **KHz:** 36 **TL:** 13.6 mm **ID:** Ø1.5 mm

Blade XXXIII



OSR - XXXIII - S

P.L.: 80 mm **A.L.:** 45 mm **KHz:** 36 **TL:** 9.7 mm **ID:** Ø1.5 mm

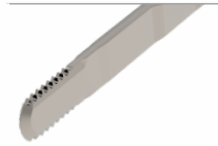
Blade XXXV



OSR - XXXV - S

P.L.: 111 mm **A.L.:** 68 mm **KHz:** 26 **TL:** 13.4 mm **ID:** Ø1.5 mm

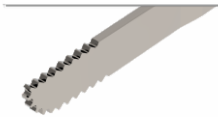
Blade XXXVI



OSR - XXXVI - S

P.L.: 82 mm **A.L.:** 45 mm **KHz:** 36 **TL:** 9.5 mm **ID:** Ø1.5 mm

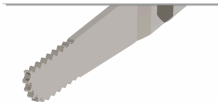
Blade XXXVIII



OSR - XXXVIII - S

P.L.: 80 mm **A.L.:** 45 mm **KHz:** 36 **TL:** 9.1 mm **ID:** Ø1.5 mm

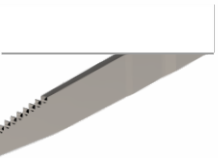
Blade XXXIX



OSR - XXXIX - S

P.L.: 83.98 mm **A.L.:** 31 mm **KHz:** 36 **TL:** 9.8 mm **ID:** Ø1.5 mm

Blade XL



OSR - XL - S

P.L.: 88 mm **A.L.:** 35 mm **KHz:** 36 **TL:** 7.5 mm **ID:** Ø1.5 mm



osteoblade™
Ultrasonic Bone Scalpel System



Mavera Torque Wrench



Mavera Foot Switch Duo



Mavera Serum Hanger

- P.L.:** TIP LENGTH
- A.L.:** ACTIVE LENGTH
- TL:** THREAD LENGTH
- B.L.:** BLADE LENGTH
- P.D.:** PRODUCT DEFINITION

OsteoBlade™ Ultrasonic Bone Scalpel

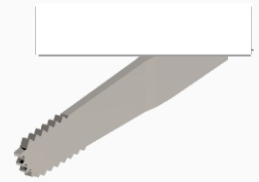
Blade XLII



OSR - XLII - S

P.L.: 220.6 mm **A.L.:** 49.7 mm **KHz:** 36 **TL:** 10.3 mm **ID:** Ø1.5 mm

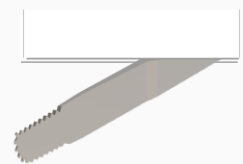
Blade XLIII



OSR - XLIII - S

P.L.: 153.9 mm **A.L.:** 98 mm **KHz:** 36 **TL:** 10 mm **ID:** Ø1.5 mm

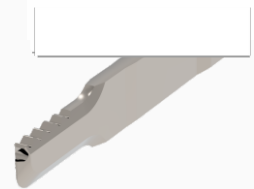
Blade XLIV



OSR - XLIV - S

P.L.: 225 mm **A.L.:** 50.2 mm **KHz:** 36 **TL:** 10 mm **ID:** Ø1.5 mm

Blade XXVI



OSR - XXVI - S

P.L.: 82 mm **A.L.:** 46 mm **KHz:** **TL:** 8.8 mm **ID:** Ø1.5 mm

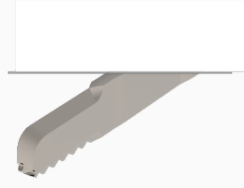
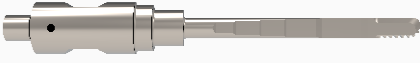
Blade XXVIII



OSR - XXVIII - S

P.L.: 78 mm **A.L.:** 14 mm **KHz:** 36 **TL:** 8 mm **ID:** Ø1.5 mm

Blade XLV



OSR - XLV - S

P.L: 82 mm **A.L:** 46 mm **KHz:** 36 **TL:** 9 mm **ID:** Ø1.5 mm

Blade XLVI



OSR - XLVI - S

P.L: 80 mm **A.L:** 45 mm **KHz:** 36 **TL:** 7 mm **ID:** Ø1.5 mm

Blade XLVII



OSR - XLVII - S

P.L: 80 mm **A.L:** 45 mm **KHz:** 36 **TL:** 9 mm **ID:** Ø1.5 mm

Blade XLIX



OSR - XLIX - S

P.L: 143 mm **A.L:** 31 mm **KHz:** 36 **TL:** 5 mm **ID:** Ø1.5 mm

Blade L



OSR - L - S

P.L: 158 mm **A.L:** 21 mm **KHz:** 36 **TL:** 8 mm **ID:** Ø2 mm

Blade LI



OSR - LI - S

PL: 69 mm **AL:** 9 mm **KHz:** 36 **TL:** 4 mm **ID:** Ø1.5 mm

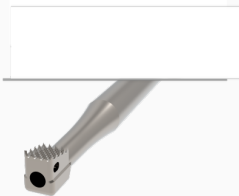
Blade LII



OSR - LII - S

PL: 69 mm **AL:** 9 mm **KHz:** 36 **TL:** 4 mm **ID:** Ø1.5 mm

Blade LIII



OSR - LIII - S

PL: 68 mm **AL:** 8 mm **KHz:** 36 **TL:** 4 mm **ID:** Ø1.5 mm

Blade LIV



OSR - LIV - S

PL: 150 mm **AL:** 10 mm **KHz:** 36 **TL:** 4 mm **ID:** Ø1.5 mm

Blade LV



OSR - LV - S

PL: 131 mm **AL:** 38 mm **KHz:** 36 **TL:** 4 mm **ID:** Ø1.5 mm

Blade LVI



OSR - LVI - S

PL: 155 mm **AL:** 13 mm **KHz:** 36 **TL:** 4 mm **ID:** Ø1.5 mm

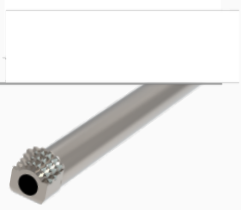
Blade LVII



OSR - LVII - S

PL: 152 mm **AL:** 10 mm **KHz:** 36 **TL:** 4 mm **ID:** Ø1.5 mm

Blade LVIII



OSR - LVIII - S

PL: 132 mm **AL:** 35 mm **KHz:** 36 **TL:** 2 mm **ID:** Ø1.5 mm

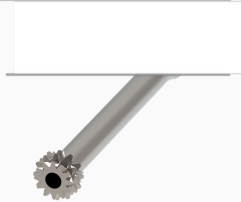
Blade LIX



OSR - LIX - S

PL: 153 mm **AL:** 12 mm **KHz:** 36 **TL:** 4 mm **ID:** Ø1.5 mm

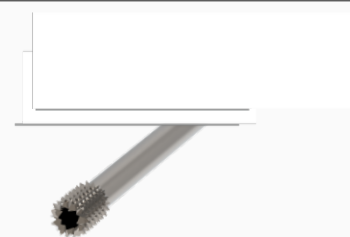
Blade LX



OSR - LX - S

PL: 151 mm **AL:** 10 mm **KHz:** 36 **TL:** 3.3 mm **ID:** Ø1.5 mm

Blade LXI



OSR - LXI - S

PL: 228 mm **AL:** 32 mm **KHz:** 36 **TL:** 4.5 mm **ID:** Ø1.5 mm

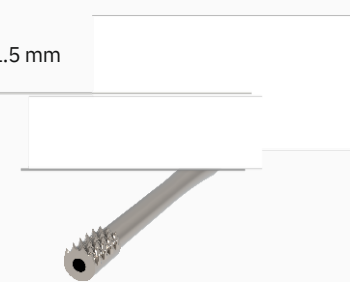
Blade LXII



OSR - LXII - S

PL: 214 mm **AL:** 16 mm **KHz:** 36 **TL:** 5 mm **ID:** Ø1.5 mm

Blade LXIII



OSR - LXIII - S

PL: 221 mm **AL:** 22 mm **KHz:** 36 **TL:** 5 mm **ID:** Ø1.5 mm

Blade LXIV



OSR - LXIV - S

PL: 220 mm **AL:** 20 mm **KHz:** 36 **TL:** 4 mm **ID:** Ø1.5 mm

Blade LXV



OSR - LXV - S

PL: 231 mm **AL:** 33 mm **KHz:** 36 **TL:** 4 mm **ID:** Ø1.5 mm

Blade LXVI



OSR - LXVI - S

P.L: 218 mm **A.L:** 28 mm **KHz:** 36 **TL:** 2 mm **ID:** Ø1.5 mm

Blade LXVII



OSR - LXVII - S

P.L: 223 mm **A.L:** 29 mm **KHz:** 36 **TL:** 4 mm **ID:** Ø1.5 mm

Blade LXVIII



OSR - BLXVIII - S

P.L: 221 mm **A.L:** 25 mm **KHz:** 36 **TL:** 4 mm **ID:** Ø1.5 mm

Blade LXIX



OSR - LXIX - S

P.L: 228 mm **A.L:** 21 mm **KHz:** 36 **TL:** 7 mm **ID:** Ø1.5 mm

Blade LXX



OSR - LXX - S

P.L: 223 mm **A.L:** 35 mm **KHz:** 36 **TL:** 5 mm **ID:** Ø1.5 mm

Blade LXXI



OSR - LXXI - S

P.L.: 220 mm **A.L.:** 25 mm **KHz:** 36 **TL:** 5.75 mm **ID:** Ø1.5 mm

Blade LXXII



OSR - LXXII - S

P.L.: 226 mm **A.L.:** 13 mm **KHz:** 36 **TL:** 4 mm **ID:** Ø1.5 mm

Blade LXXIII



OSR - LXXIII - S

P.L.: 223 mm **A.L.:** 30 mm **KHz:** 36 **TL:** 4 mm **ID:** Ø1.5 mm

Blade LXXIV



OSR - LXXIV - S

P.L.: 214 mm **A.L.:** 30 mm **KHz:** 36 **TL:** 3.3 mm **ID:** Ø1.5 mm

Disclaimer

A surgeon should rely exclusively on his or her own professional medical/clinical judgment when deciding which particular product to use when treating a patient. Maveria Medical Devices Inc. does not dispense medical advice and advocates that surgeons be trained in the use of any particular product before using it in surgery. The content presented is intended to identify the breadth of Maveria Medical Devices Inc. product options. A surgeon must always refer to the package insert, product label and/or instructions for use before using any Maveria Medical Devices Inc. product. Products may not always be available in all markets in a similar capacity due to the local regulatory and/or medical practices. It is advised that you contact a Maveria Medical Devices Inc. representative if you have questions about Maveria Medical Devices Inc. products. OsteoBladeTM is a Registered Trademark of Maveria Medical Devices Inc.

Maveria Medical Devices Inc. guarantees that the products are designed, manufactured and packaged on application of the EN ISO 13485 certified quality management with all possible care, using the most suitable state-of-the-art processes and applying the principle of integrating safety into its design and manufacture. This system is designed to guarantee the safe use of device when it is employed under condition and for the purposes for which it is intended, in accordance with precautions described in the operator's manual and/or instructions for use and to minimize the risks associated with the use of the device as far as possible, although they cannot be totally eliminated. The device must only be used under the responsibility of specialist medical personnel, taking account of the unavoidable risks and the possible side effects and complications of the treatment for which, it is designed, including those referred to in other sections of these instructions for use

U.S. and foreign patents pending
Issue Date Dec 2020 Copyright© 2020.
Maveria Medical Devices Inc. All rights reserved

OST0620-EN-REV01
Printed in Turkey

CE
2803